



SRI BHARATHI

ENGINEERING COLLEGE FOR WOMEN

(Approved by AICTE, New Delhi and Affiliated to Anna University, Chennai)
Kaikkurichi, Pudukkottai -622 303

www.sbec.edu.in

NAAC DOCUMENTS



Quality Indicator Frame Work

Criterion – 1

CURRICULAR ASPECTS

Submitted by

IQAC

Internal Quality Assurance Cell

Sri Bharathi Engineering College for Women



SRI BHARATHI ENGINEERING COLLEGE FOR WOMEN

(Approved by AICTE, New Delhi and Affiliated to Anna University, Chennai)
Pudukkottai - Aranthangi Road,
Kaikkurichi, Pudukkottai - 622 303.

Date :

TO WHOMSEVER IT MAY CONCERN

1.4.1 Institution obtains feedback on the academic performance and ambience of the institution from various stakeholders, such as Students, Teachers, Employers, Alumni etc. and action taken report on the feedback is made available on institutional website.

Feedback processes of the institution may be classified as follows:

- A. Feedback collected, analysed, action taken & communicated to the relevant bodies and feedback hosted on the institutional website*
- B. Feedback collected, analysed and action has been taken and communicated to the relevant bodies*
- C. Feedback collected and analysed*
- D. Feedback collected*
- E. Feedback not collected*

Response: *Option A. Feedback collected, analysed, action taken & communicated to the relevant bodies and feedback hosted on the institutional website.*

PRINCIPAL

**PRINCIPAL
SRI BHARATHI ENGINEERING
COLLEGE FOR WOMEN
KAIKKURICHI - 622 303.
PUDUKKOTTAI DISTRICT**



SRI BHARATHI ENGINEERING COLLEGE FOR WOMEN

(Approved by AICTE, New Delhi & Affiliated to Anna University, Chennai)

KAKKURICHI, PUDUKKOTTAI, 622303

Criterion 1	Curricular Aspects	100
--------------------	---------------------------	------------

1.4.1 Institution obtains feedback on the academic performance and ambience of the institution from various stakeholders, such as Students, Teachers, Employers, Alumni etc. and action taken report on the feedback is made available on institutional website.

2020-2021

S.NO.	DETAILS	PAGE NO
1.	FEEDBACK ANALYSIS REPORT (Student,Teacher,Alumni,Parent,Employer)	4-13
2.	ACTION TAKEN REPORT	14-15
3.	PROOF OF ACTION TAKEN REPORT	16-23



SRI BHARATHI ENGINEERING COLLEGE FOR WOMEN


(Approved by AICTE, Affiliated to Anna University, Chennai, India)

Kaikkurichi, Pudukkottai – 622 303

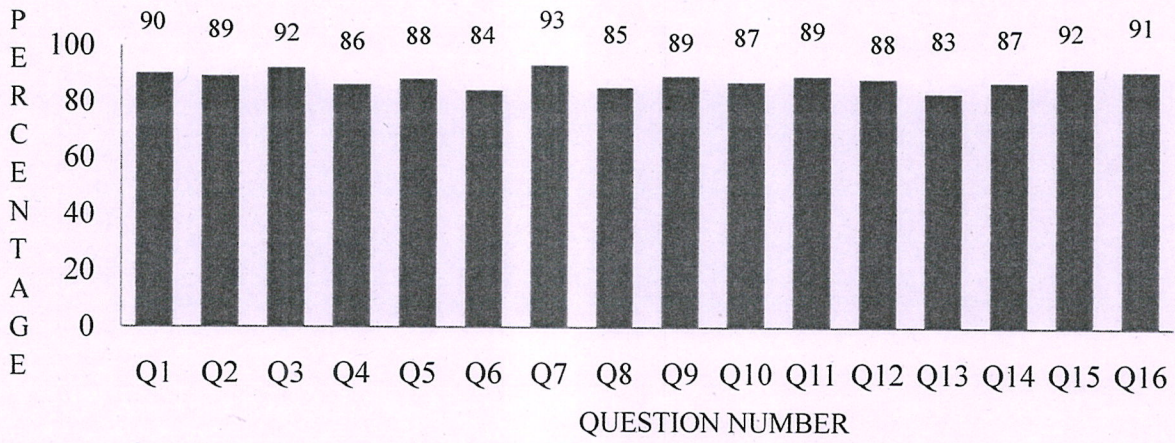
CONSOLIDATED REPORT - STUDENTS FEEDBACK ON ACADEMIC PERFORMANCE & AMBIENCE ACADEMIC YEAR 2020-2021

TOTAL ENTRY: 192

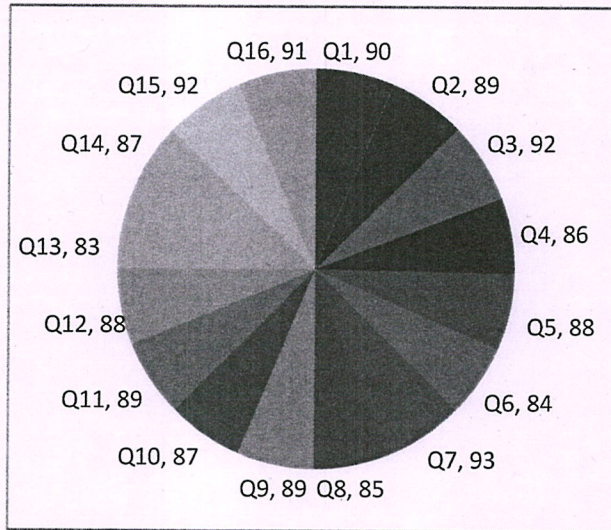
Q.NO	DESCRIPTION	AVERAGE	PERCENTAGE
ACADEMIC PERFORMANCE (CURRICULUM)			
1.	The syllabus of the courses that you have studied in relation to the course competencies expected.	3.61	90
2.	The course curriculum framed by university is relevant to the programme and year of study.	3.58	89
3.	The allocation of the hours and credit to the course.	3.69	92
4.	The electives offered in syllabus are in relation to the technological advancement.	3.46	86
5.	Size of syllabus in terms of the load on the student.	3.54	88
6.	The courses in terms of extra learning or self-learning considering the design of the courses.	3.38	84
7.	The evaluation scheme designed for each of the course.	3.73	93
8.	The Syllabus coverage as prescribed by University.	3.38	85
9.	The experiments in the lab courses are relation to the real time application.	3.56	89
10.	The co-curricular activities conducted to bridge the gap between Academic and Industrial needs.	3.48	87
AMBIENCE (INFRASTRUCTURE)			
11.	The alternative source of energy & energy conservation methods adopted by institution.	3.56	89
12.	The management of various types of degradable and non-degradable waste in the college campus.	3.53	88
13.	The technologies for water conservation facility and green campus facility available in the college campus.	3.33	83
14.	The desire friendly and barrier free environment provided by institution.	3.48	87
15.	The ICT facilities available in class room, computing facilities provided by the institution.	3.66	92
16.	The infrastructure facilities available to meet out curricular, co-curricular, extracurricular activities by the institution	3.65	91

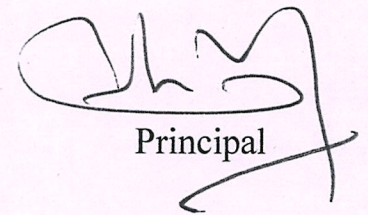

Dr. S. THILAGAVATHI M.E., Ph.D.,
PRINCIPAL
SRI BHARATHI ENGINEERING
COLLEGE FOR WOMEN
Kaikkurichi - 622 303, Pudukkottai Dt.

**STUDENTS FEEDBACK ON ACADEMIC PERFORMNACE & AMBIENCE
ACADEMIC YEAR 2020-2021**



**STUDENTS FEEDBACK ON ACADEMIC PERFORMANCE & AMBIENCE
ACADEMIC YEAR 2020-2021**




 Principal



Dr. S.THILAGAVATHI M.E., Ph.D.,
 PRINCIPAL
SRI BHARATHI ENGINEERING
COLLEGE FOR WOMEN
 Kaikkurchi - 622 303, Pudukkottai Dt.



SRI BHARATHI ENGINEERING COLLEGE FOR WOMEN

(Approved by AICTE, Affiliated to Anna University, Chennai, India)

Kaikkurichi, Pudukkottai – 622 303

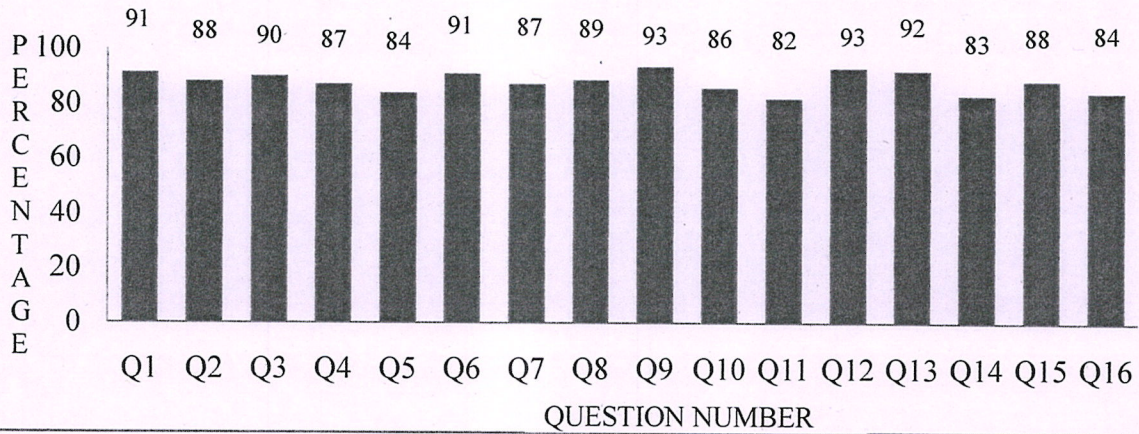
CONSOLIDATED REPORT-TEACHER FEEDBACK ON ACADEMIC PERFORMANCE & AMBIENCE ACADEMIC YEAR 2020-2021

TOTAL ENTRY: 48

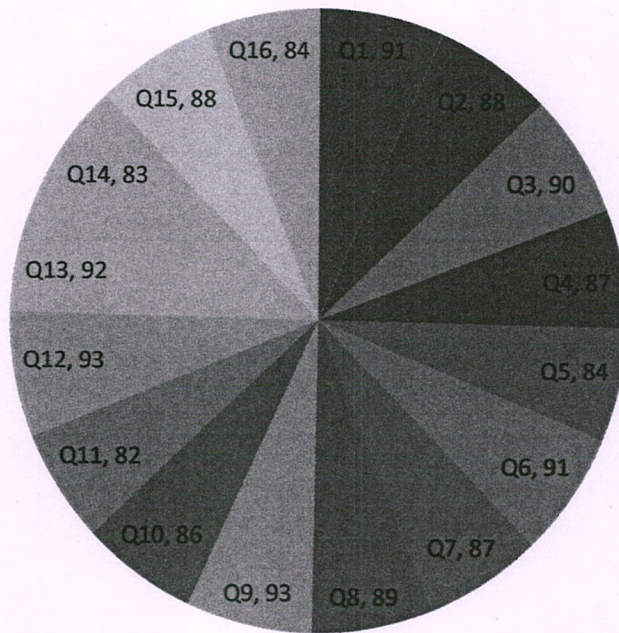
Q.NO	DESCRIPTION	AVERAGE	PERCENTAGE
ACADEMIC PERFORMANCE (CURRICULUM)			
1.	The syllabus of the courses that you have studied in relation to the course competencies expected.	3.65	91
2.	The course curriculum framed by university is relevant to the programme and year of study.	3.52	88
3.	The allocation of the hours and credit to the course.	3.6	90
4.	The electives offered in syllabus are in relation to the technological advancement.	3.48	87
5.	Size of syllabus in terms of the load on the student.	3.35	84
6.	The courses in terms of extra learning or self-learning considering the design of the courses.	3.63	91
7.	The evaluation scheme designed for each of the course.	3.48	87
8.	The Syllabus coverage as prescribed by University.	3.54	89
9.	The experiments in the lab courses are relation to the real time application.	3.73	93
10.	The co-curricular activities conducted to bridge the gap between Academic and Industrial needs.	3.42	86
AMBIENCE (INFRASTRUCTURE)			
11.	The alternative source of energy & energy conservation methods adopted by institution.	3.27	82
12.	The management of various types of degradable and non-degradable waste in the college campus.	3.71	93
13.	The technologies for water conservation facility and green campus facility available in the college campus.	3.67	92
14.	The desire friendly and barrier free environment provided by institution.	3.31	83
15.	The ICT facilities available in class room, computing facilities provided by the institution.	3.52	88
16.	The infrastructure facilities available to meet out curricular, co-curricular, extracurricular activities by the institution	3.35	84

Dr. S. THILAGAVATHI M.E., Ph.D.
PRINCIPAL
SRI BHARATHI ENGINEERING
COLLEGE FOR WOMEN
Kaikkurchi - 622 303, Pudukkottai Dt.

**TEACHER FEEDBACK ON ACADEMIC PERFORMANCE & AMBIENCE
ACADEMIC YEAR 2020-2021**



**TEACHER FEEDBACK ON ACADEMIC PERFORMANCE
& AMBIENCE
ACADEMIC YEAR 2020-2021**



Principal

Dr. S.THILAGAVATHI M.E., Ph.D.
PRINCIPAL
SRI BHARATHI ENGINEERING
COLLEGE FOR WOMEN
 Kaikkurchi - 622 303, Pudukkottai Dt.



SRI BHARATHI ENGINEERING COLLEGE FOR WOMEN

(Approved by AICTE, Affiliated to Anna University, Chennai, India)

Kaikkurichi, Pudukkottai – 622 303

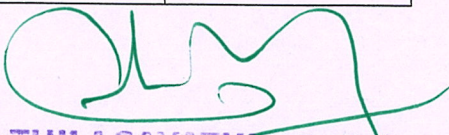
CONSOLIDATED REPORT-ALUMNI FEEDBACK ON ACADEMIC

PERFORMANCE & AMBIENCE

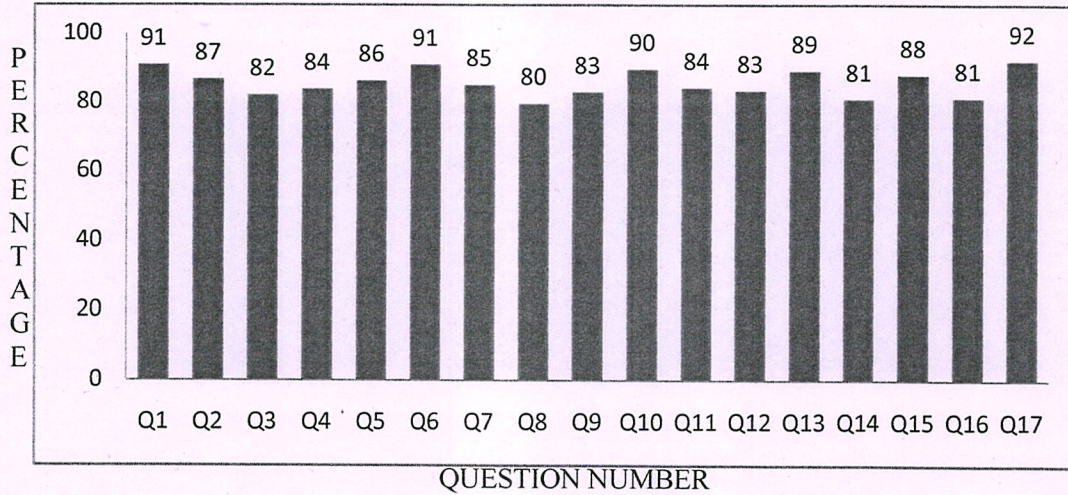
ACADEMIC YEAR 2020-2021

TOTAL ENTRY: 60

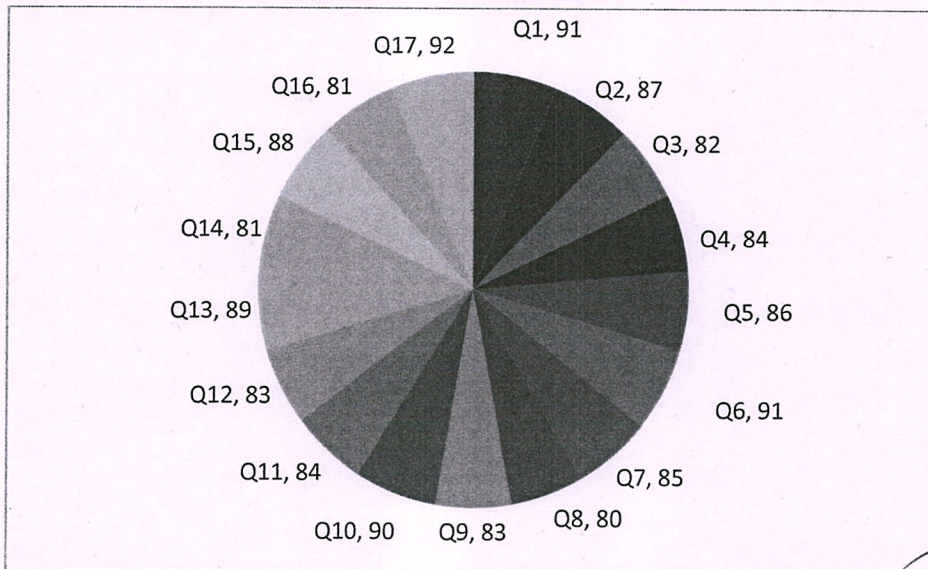
Q.NO	DESCRIPTION	AVERAGE	PERCENTAGE
ACADEMIC PERFORMANCE (CURRICULUM)			
1.	The syllabus of the courses that you have studied in relation to the course competencies expected.	3.53	91
2.	The course curriculum framed by university is relevant to the programme and year of study.	3.47	87
3.	The allocation of the hours and credit to the course.	3.28	82
4.	The electives offered in syllabus are in relation to the technological advancement.	3.35	84
5.	Size of syllabus in terms of the load on the student.	3.45	86
6.	The courses in terms of extra learning or self-learning considering the design of the courses.	3.63	91
7.	The evaluation scheme designed for each of the course.	3.40	85
8.	The Syllabus coverage as prescribed by University.	3.18	80
9.	The experiments in the lab courses are relation to the real time application.	3.32	83
10.	The co-curricular activities conducted to bridge the gap between Academic and Industrial needs.	3.58	90
11.	Training, Placement and Campus Recruitment offered by the Institution.	3.37	84
AMBIENCE (INFRASTRUCTURE)			
12.	The alternative source of energy & energy conservation methods adopted by institution.	3.33	83
13.	The management of various types of degradable and non-degradable waste in the college campus.	3.57	89
14.	The technologies for water conservation facility and green campus facility available in the college campus.	3.23	81
15.	The desire friendly and barrier free environment provided by institution.	3.52	88
16.	The ICT facilities available in class room, computing facilities provided by the institution.	3.25	81
17.	The infrastructure facilities available to meet out curricular,co-curricular,extracurricular activities by the institution	3.68	92

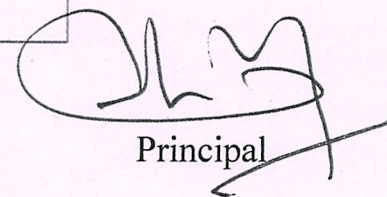

Dr. S. THILAGAVATHI M.E., Ph.D.
PRINCIPAL
SRI BHARATHI ENGINEERING
COLLEGE FOR WOMEN
Kaikkurichi - 622 303, Pudukkottai Dt.

**ALUMNI FEEDBACK ON ACADEMIC PERFORMANCE & AMBIENCE
ACADEMIC YEAR 2020-2021**



**ALUMNI FEEDBACK ON ACADEMIC PERFORMANCE & AMBIENCE
ACADEMIC YEAR 2020-2021**




 Principal


Dr. S. THILAGAVATHI M.E., Ph.D.,
 PRINCIPAL
 SRI BHARATHI ENGINEERING
 COLLEGE FOR WOMEN
 Kaikkurchi - 622 303, Pudukkottai Dt.



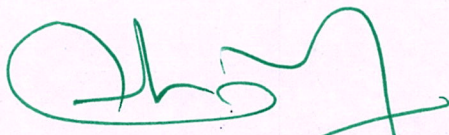
SRI BHARATHI ENGINEERING COLLEGE FOR WOMEN

(Approved by AICTE, Affiliated to Anna University, Chennai, India)
Kaikkurichi, Pudukkottai – 622 303

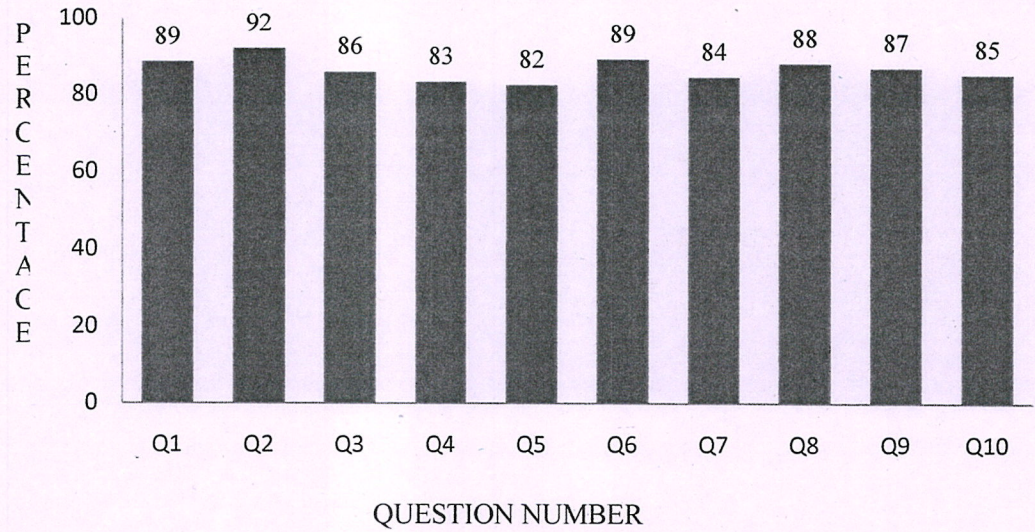
CONSOLIDATED REPORT-PARENT FEEDBACK ON ACADEMIC PERFORMANCE & AMBIENCE ACADEMIC YEAR 2020-2021

TOTAL ENTRY: 85

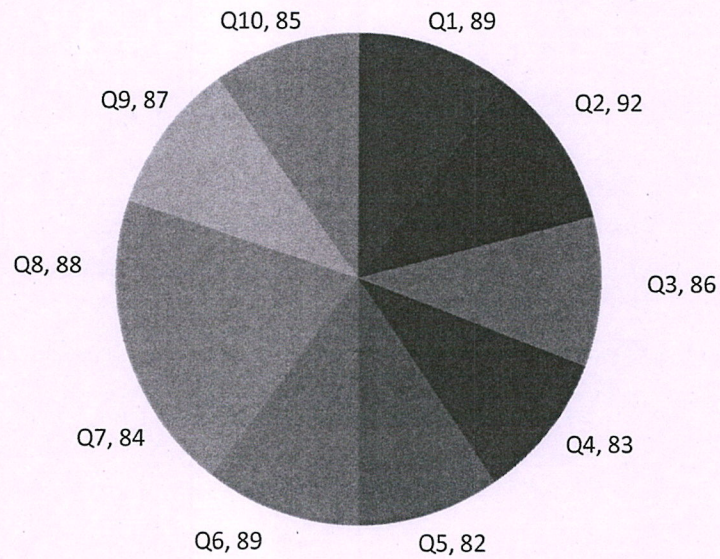
Q.NO	DESCRIPTION	AVERAGE	PERCENTAGE
ACADEMIC PERFORMANCE (CURRICULUM)			
1.	The electives offered in syllabus are in relation to the technological advancement.	3.54	89
2.	Size of syllabus in terms of the load on the student.	3.68	92
3.	The courses in terms of extra learning or self-learning considering the design of the courses.	3.44	86
4.	The evaluation scheme designed for each of the course.	3.33	83
AMBIENCE (INFRASTRUCTURE)			
5.	The alternative source of energy & energy conservation methods adopted by institution.	3.29	82
6.	The management of various types of degradable and non-degradable waste in the college campus.	3.56	89
7.	The technologies for water conservation facility and green campus facility available in the college campus.	3.38	84
8.	The desire friendly and barrier free environment provided by institution.	3.52	88
9.	The ICT facilities available in class room, computing facilities provided by the institution.	3.47	87
10.	The infrastructure facilities available to meet out curricular,co-curricular,extracurricular activities by the institution	3.40	85

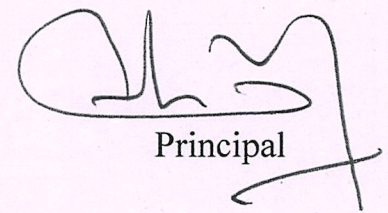

Dr. S. THILAGAVATHI M.E., Ph.D.,
PRINCIPAL
SRI BHARATHI ENGINEERING
COLLEGE FOR WOMEN
Kaikkurichi - 622 303, Pudukkottai Dt.

**PARENT FEEDBACK ON ACADEMIC PERFORMNACE & AMBIENCE
ACADEMIC YEAR 2020-2021**



**PARENT FEEDBACK ON ACADEMIC PERFORMANCE
& AMBIENCE
ACADEMIC YEAR 2020-2021**




 Principal


Dr. S. THILAGAVATHI M.E., Ph.D.,
 PRINCIPAL
 SRI BHARATHI ENGINEERING
 COLLEGE FOR WOMEN
 Kaikkurchi - 622 303, Pudukkottai Dt.



SRI BHARATHI ENGINEERING COLLEGE FOR WOMEN

(Approved by AICTE, Affiliated to Anna University, Chennai, India)

Kaikkurichi, Pudukkottai – 622 303

CONSOLIDATED REPORT-EMPLOYER FEEDBACK ON ACADEMIC

PERFORMANCE & AMBIENCE

ACADEMIC YEAR 2020-2021

TOTAL ENTRY: 62

Q.NO	DESCRIPTION	AVERAGE	PERCENTAGE
ACADEMIC PERFORMANCE (CURRICULUM)			
1.	The syllabus of the courses that you have studied in relation to the course competencies expected.	3.39	85
2.	The course curriculum framed by university is relevant to the programme and year of study.	3.58	90
3.	The allocation of the hours and credit to the course.	3.47	87
4.	Training, Placement and Campus Recruitment offered by the Institution.	3.65	91
AMBIENCE (INFRASTRUCTURE)			
5.	The alternative source of energy & energy conservation methods adopted by institution.	3.40	85
6.	The management of various types of degradable and non-degradable waste in the college campus.	3.37	84
7.	The technologies for water conservation facility and green campus facility available in the college campus.	3.32	83
8.	The desire friendly and barrier free environment provided by institution.	3.26	81
9.	The ICT facilities available in class room, computing facilities provided by the institution.	3.45	86
10.	The infrastructure facilities available to meet out curricular, co-curricular, extracurricular activities by the institution	3.66	92

Dr. S. THILAGAVATHI M.E., Ph.D.,

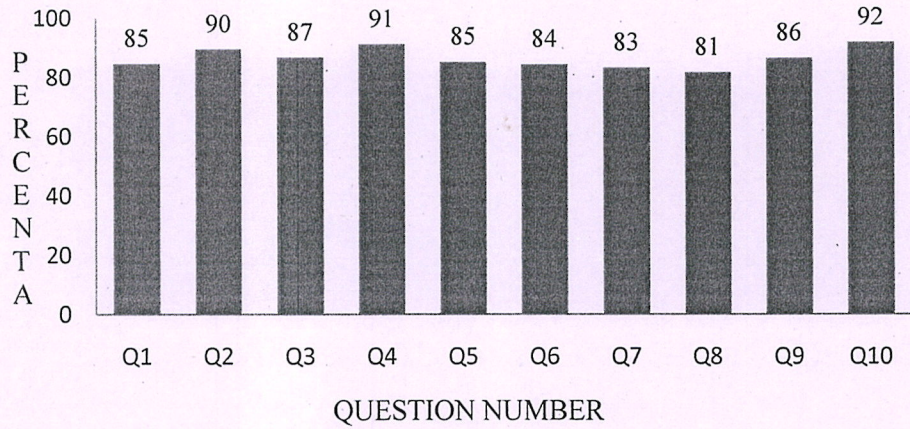
PRINCIPAL

**SRI BHARATHI ENGINEERING
COLLEGE FOR WOMEN**

Kaikkurichi - 622 303, Pudukkottai Dt.

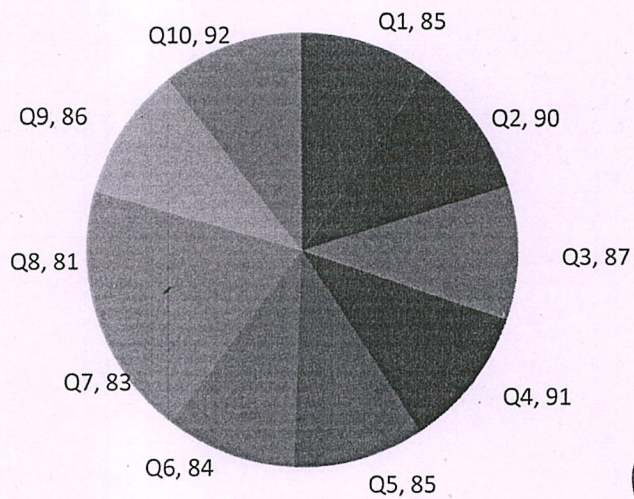
EMPLOYER FEEDBACK ON ACADEMIC PERFORMANCE & AMBIENCE

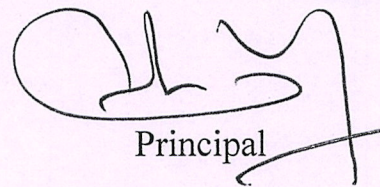
ACADEMIC YEAR 2020-2021



EMPLOYER FEEDBACK ON ACADEMIC PERFORMANCE & AMBIENCE

ACADEMIC YEAR 2020-2021




Principal


Dr. S. THILAGAVATHI M.E., Ph.D.,
PRINCIPAL
SRI DHARATHI ENGINEERING
COLLEGE FOR WOMEN
Puducherry - 605 003, Puducherry, Dt.



SRI BHARATHI ENGINEERING COLLEGE FOR WOMEN

(Approved by AICTE, New Delhi & Affiliated to Anna University, Chennai)

KAIKKURICHI, PUDUKKOTTAI, 622303

Date: 08/03/21

STAKEHOLDER FEEDBACK ON ACADEMIC PERFORMANCE & AMBIENCE ACTION TAKEN REPORT-2020-2021

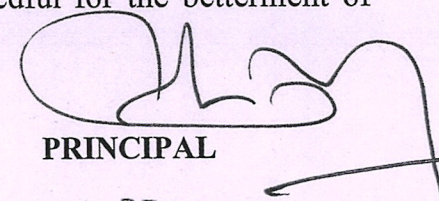
In order to improve the quality initiative, our Institution IQAC collected the feedback about R-2017 curriculum and the syllabus followed in our Institution from the various stake holders (Students, Faculty members, Alumni, Employer, Parents) offered by Anna University Chennai.

As a result, the collected feedback about the curriculum and syllabus were analyzed and based on the suggestion/representation received from the stakeholder in every department for bridging the curricular gap the following topics were suggested to include in Existing Anna University R-2017 Curriculum and Syllabus with recent trends for the benefit of the students community.

S.No	Name of the Degree	Course Code	Name of the Course	Topic to be included	Unit No
1.	B.E-Civil Engineering	CE8401	Construction Techniques And Practices	Smart Materials and Measuring Techniques	1
2.	B.E-Computer Science and Engineering	CS8492	Database Management Systems	Deep learning techniques with its algorithm	4
3.	B.E-Electronics and Communication	EC8095	VLSI Design	Emerging Technologies of Bio signal processing in VLSI	5
4.	B.E-Electrical and Electronics Engineering	EE8702	Power System Operation And Control	Energy consumption modeling in electric vehicle system	3

In this regard we kindly request you to discuss the above recommendations in the forthcoming Board of Studies (BoS) meeting and do the needful for the betterment of students Community


Dr. S.THILAGAVATHI M.E., Ph.D.,
PRINCIPAL
SRI BHARATHI ENGINEERING
COLLEGE FOR WOMEN
Kaikkurichi - 622 303, Pudukkottai Dt.


PRINCIPAL
PRINCIPAL
SRI BHARATHI ENGINEERING
COLLEGE FOR WOMEN
KAIKKURICHI - 622 303,
PUDUKKOTTAI DISTRICT



SRI BHARATHI ENGINEERING COLLEGE FOR WOMEN

(Approved by AICTE, New Delhi & Affiliated to Anna University, Chennai)

KAIKKURICHI, PUDUKKOTTAI, 622303

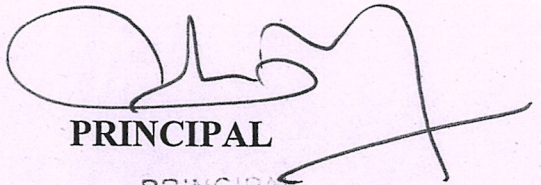
In this regard we sent a letter to Anna University and Requested to discuss the above recommendations in the forthcoming Board of Studies(BoS) meeting for the betterment of students community.

In addition to that, the following Value added courses were offered by all Departments of SBECW in the academic year 2020-2021 to enhance the curricular content with recent trend for the benefit of the student community with the approval from various Department Advisory Committee (DAC) members.

List of Value added courses conducted to bridge the curricular gap

S.No	VAC Course Name	Department
1.	Smart material and Measuring Techniques	CIVIL
2.	Construction Management techniques	
3.	Deep Learning Techniques with its algorithm	CSE
4.	Rest API with Flask and Python	
5.	Applications of CNC Machine in Electronic Industry	ECE
6.	Emerging technologies of Bio signal processing in VLSI	
7.	Energy consumption modeling in Electrical vehicle	EEE
8.	MATLAB-Basic and Programming in Electrical Engineering.	


Dr. **S.THILAGAVATHI** M.E., Ph.D.,
PRINCIPAL
SRI BHARATHI ENGINEERING
COLLEGE FOR WOMEN
Kaikkurichi - 622 303, Pudukkottai Dt.


PRINCIPAL
PRINCIPAL
SRI BHARATHI ENGINEERING
COLLEGE FOR WOMEN
KAIKKURICHI - 622 303.
PUDUKKOTTAI DISTRICT

SRI BHARATHI ENGINEERING COLLEGE FOR WOMEN

(Approved by AICTE, New Delhi, Affiliated to Anna University, Chennai-25)

Kaikkurichi, Pudukkottai, Tamil Nadu – 622 303, India

Report on Value Added Course

Title: Applications of CNC Machine in Electronics Industry

Resource Person: **Mr.S.SRINIVASAN,**
Managing Director,
Spiderman PVC Private Limited,
No 17, Madhavaram, Chennai - 600060 .

Date of conduct from : **30.11.2020** To: **5.12.2020** Duration: **36 Hours**

Organized Department : **Electronics and Communication Engineering**

Participant Year: **2/ 3 /4** Semester: **ODD** No. of Students Registered : **40**

Venue: **Google Meet: meet.google.com/bzb-jwsj-zgn**

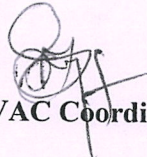
Outcome of Value Added Course (VAC) :At the end of Course ,Students can able to


- Understand the fundamentals of NC/CNC
- Develop electronic components, such as printed circuit boards and sensors
- Design machine tools according to the functionality.
- Test and maintain CNC machines.
- Implement CNC technologies for applications other than machining.

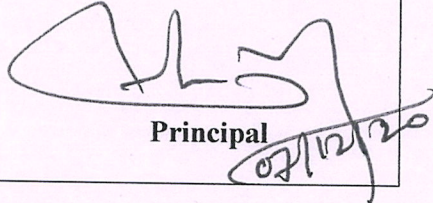
No. of students successfully completed the VAC course is **40 Students** based on the following Assessment process.

Assessment Process

- Students, who are securing **more than 60% on total score** and secured more than **75%** in attendance is eligible to receive the certificate for the VAC course conducted
- Total Score = (0.5 *Attendance in VAC out of 100 percentage + 0.5 *Test mark in VAC out of 100 marks)


VAC Coordinator


HOD/ ECE
HOD / ECE


Principal

SRI BHARATHI ENGINEERING
COLLEGE FOR WOMEN
KAIKKURICHI,
PUDUKKOTTAI - 622 303


Dr. S.THILAGAVATHI M.E., Ph.D.,
PRINCIPAL
SRI BHARATHI ENGINEERING
COLLEGE FOR WOMEN
Kaikkurichi - 622 303, Pudukkottai Dt.



SPIDERMAN PVC TECHNOLOGY PRIVATE LIMITED
NO:17, MADHAVARAM, CHENNAI-600060

CERTIFICATE OF PARTICIPATION

This is to Certify that

Ms. NAGALAKSHMI.P, III ECE from Sri Bharathi Engineering College for Women

has successfully completed Value Added Course on

“Applications of CNC Machine in Electronics Industry”

Conducted from 30.11.2020 to 05.12.2020 (6 days) during the Academic year 2020-2021.

Dr. S. THILAGAVATHI M.E., Ph.D.,
PRINCIPAL
SRI BHARATHI ENGINEERING
COLLEGE FOR WOMEN
Kaikkurchi - 622 303, Pudukkottai Dt.

Managing Director

SRI BHARATHI ENGINEERING COLLEGE FOR WOMEN

(Approved by AICTE, New Delhi, Affiliated to Anna University, Chennai-25)
Kaikkurichi, Pudukkottai, Tamil Nadu – 622 303, India

Report on Value Added Course

Title: ENERGY CONSUMPTION MODELLING IN ELECTRIC VEHICLE

Resource Person: 1.M.Madhan Kumar,
Founder,
Power Integrated Solutions PVT LTD,
#10A/3 Radhakrishna Colony,
Sastri Road, Thennur, Trichy-17.
2. K.Ram Niwas
Senior Engineer

Date of conduct from : 30 Nov 2020 To: 04 Dec 2020 Duration: 30 Hours

Organized Department : ELECTRICAL AND ELECTRONICS ENGINEERING

Participant Year: 2/3/4 Semester: ODD No. of Students Registered : 27

Venue: online mode Google Meet: <https://meet.google.com/nvy-thum-mbb>

Outcome of Value Added Course (VAC)

At the end of the Course, Students can able to

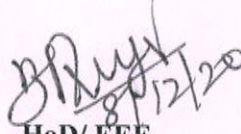
- Explain about the basics of electric vehicle and its principles.
- Describe about the electric vehicle architecture and design of motor.
- Obtain insight about Grid integration of Electric Vehicles, Intelligent control techniques of Electric vehicles.
- Comprehend about the batteries overview and its characteristics.
- Demonstrate about the benefits of electric vehicles, environment impacts, charging station.
- Illustrate about mathematical modeling of an electric vehicle.

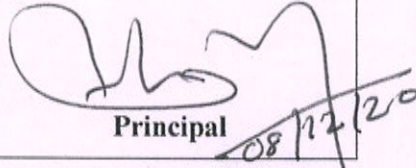
No. of students successfully completed the VAC course is 27 students based on the following assessment process.

Assessment Process

- Students, who are securing **more than 60% on total score** and secured more than 60% in attendance is eligible to receive the certificate for the VAC course conducted.
- Total Score = (0.5 * Attendance in VAC out of 100 percentage + 0.5 * Test mark in VAC out of 100 marks)


VAC Coordinator


HoD/ EEE


Principal


Dr. S. THILAGAVATHI M.E., Ph.D.,
PRINCIPAL
SRI BHARATHI ENGINEERING
COLLEGE FOR WOMEN
Kaikkurichi - 622 303, Pudukkottai Dt.

HOD EEE
SRI BHARATHI ENGINEERING
COLLEGE FOR WOMEN
KAIKKURICHI,
PUDUKKOTTAI - 622 303.

PRINCIPAL
SRI BHARATHI ENGINEERING
COLLEGE FOR WOMEN
KAIKKURICHI - 622 303.
PUDUKKOTTAI DISTRICT

CERTIFICATE OF COMPLETION



Power Integrated Solutions
#10A/3 Radhakrishna Colony,
Sastri Road, Thennur, Trichy-17
powerintegratedsolutions@gmail.com

This is to certify that Mr/Ms AASHIKA R, Reg No: 912619105001 has successfully completed the value-added program on “ENERGY CONSUMPTION MODELLING IN ELECTRIC VEHICLES” conducted at Sri Bharathi Engineering College for Women, Pudukkottai in association with Power Integrated Solutions, Trichy from 30.11.2020 to 04.12.2020.

H. Thirumala
HR Manager.

HR MANAGER

Power Integrated Solutions

B. Thirumala

HOD/EEE

SBECW

S. Thilagavathi

Dr. **S. THILAGAVATHI M.E., Ph.D.**
PRINCIPAL

**SRI BHARATHI ENGINEERING
COLLEGE FOR WOMEN**
Kaikurichi - 622 303, Pudukkottai Dt.

H. Thirumala

PRINCIPAL

SBECW



SRI BHARATHI ENGINEERING COLLEGE FOR WOMEN

(Approved by AICTE, New Delhi, Affiliated to Anna University, Chennai-25)

Kaikkurichi, Pudukkottai, Tamil Nadu – 622 303, India

Report on Value Added Course

Title:	Construction Management Techniques				
Resource Person:	Er.K.Basheer Mohamed, B.E, M.Sc(Rev), FIV, Registered Engineer, Shabee Constructions, Pudukkottai.				
Date of conduct from :	26.04.2021	To:	30.04.2021	Duration:	30 Hours
Organized Department :	CIVIL ENGINEERING				
Participant Year:	2, 3, 4	Semester:	EVEN	No. of Students Registered :	27
Venue:	Online mode google meet: https://meet.google.com/nax-eygz-nky				

Outcome of Value Added Course (VAC): At the end of the Course, Students can able to

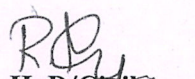
- Understand the process of Managing Projects with Live examples.
- Know the role of a Construction/project manager and the skills necessary for construction project management field.
- Plan out and properly execute any construction project despite the Size, budget and/or Complexity.
- Explain the process of Planning & Scheduling.
- Manage time and avoid falling behind Schedule.
- Manage cost and how to manage your project budget.
- Explain the Safety & Quality Management process from Scratch.

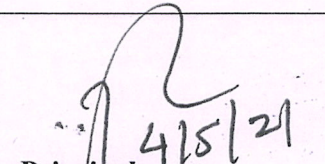
No. of students successfully completed the VAC course is **27 students** based on the following assessment process.

Assessment Process

- Students securing **more than 60% on total score** and secured more than 75% in attendance is eligible to receive the certificate for the VAC course conducted
- Total Score = (0.5 * Attendance in VAC out of 100 percentage + 0.5 * Test mark in VAC out of 100 marks)


VAC Coordinator


HoD/Civil
HOD / CIVIL


Principal
PRINCIPAL

SRI BHARATHI ENGINEERING
COLLEGE FOR WOMEN
KAIKKURICHI,
PUDUKKOTTAI - 622 303

SRI BHARATHI ENGINEERING
COLLEGE FOR WOMEN
KAIKKURICHI - 622 303.
PUDUKKOTTAI DISTRICT


Dr. S. THILAGAVATHI M.E., Ph.D.,
PRINCIPAL
SRI BHARATHI ENGINEERING
COLLEGE FOR WOMEN
Kalkkurchi - 622 303, Pudukkottai Dt.



SHABEE CONSTRUCTION

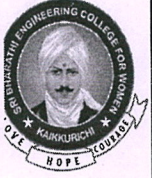
Shop #12, KP Super Complex, TS No: 4128, South 3rd Street, Near Supreme Cycles, Pudukkottai

CERTIFICATE OF PARTICIPATION

This Certificate is awarded to Ms. RAJATHI T, Studying in B.E-Civil Engineering, II Year, Sri Bharathi Engineering College for Women for successfully completing the Value Added Course on "Construction Management Techniques" Conducted from 26.04.2021-30.04.2021 (5 days) during the Academic year 2020-2021.

Dr. **S.THILAGAVATHI** M.E., Ph.D.,
PRINCIPAL
SRI BHARATHI ENGINEERING
COLLEGE FOR WOMEN
Kalkkurchi - 622 303, Pudukkottai Dt.

Registered Engineer,
Shabee Constructions.



SRI BHARATHI ENGINEERING COLLEGE FOR WOMEN

(Approved by AICTE, New Delhi, Affiliated to Anna University, Chennai-25)

Kaikkurichi, Pudukkottai, Tamil Nadu – 622 303, India

Report on Value Added Course

Title: Rest API with flask and python

Resource Person:

Resource Person 1 :

Dr. N.Krishnaraj
AWS Trainer

Resource Person 2 :

Dr. Vivek Yoganandh
DevOps Trainer

Date of conduct from :

30.11.2020

To:

04.12.2020

Duration:

30 Hours

Organized Department :

COMPUTER SCIENCE AND ENGINEERING

Participant Year:

2,3,4 (CSE)&
4(IT)

Semester:

ODD

No. of Students Registered :

78

Venue:

<https://meet.google.com/vzv-fnhj-kdp>

Outcome of Value Added Course (VAC)

At the end of the VAC course the student can able to

- Explain basics of python to create flask application.
- Connect web or mobile applications to databases and servers via REST APIs.
- Understand the different layers of a web server and how web applications interact with each other.
- Create secure and reliable REST APIs which include authentication, deployments, and database migration.
- Develop professional-grade REST APIs with expert instruction.

Assessment Process

- Students securing **more than 60% on total score** and secured more than 75% in attendance is eligible to receive the certificate for the VAC course conducted
- Total Score = (0.5 *Attendance in VAC out of 100 percentage + 0.5 *Test mark in VAC out of 100 marks)

VAC Coordinator

HOD / CSE

HOD / CSE

Principal

Principal

SRI BHARATHI ENGINEERING
COLLEGE FOR WOMEN
KAIKKURCHI,
PUDUKKOTTAI - 622 303.

SRI BHARATHI ENGINEERING
COLLEGE FOR WOMEN
KAIKKURCHI - 622 303
PUDUKKOTTAI DISTRICT

Dr. S.THILAGAVATHI M.E., Ph.D.,
PRINCIPAL
SRI BHARATHI ENGINEERING
COLLEGE FOR WOMEN
Kaikkurchi - 622 303, Pudukkottai Dt.



ROOBOO TECH
SOFTWARE TRAINING INSTITUTE



ROOBOO
Design. Develop. Deliver

Certificate of Completion

*This is to certify that Ms. D. SATHI is studying in CSE at Sri Bharathi Engineering College for Women has successfully completed her value added course titled **REST API WITH FLASK AND PYTHON** during the period from 30.11.2020 to 04.12.2020.*

Managing Director
ROOBOO

Principal
SBECW

Dr. S. THILAGAVATHI M.E., Ph.D.,
PRINCIPAL
SRI BHARATHI ENGINEERING
COLLEGE FOR WOMEN
Kaikkurchi - 622 303, Pudukkottai Dt.